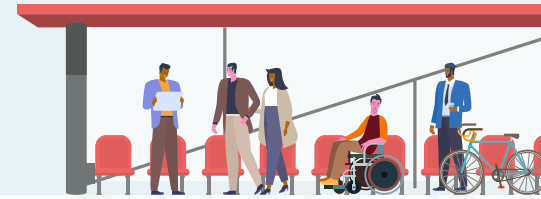


TRANSPORTATION FACTORS THAT SHAPE OUR FUTURE

visualize
2045

A long-range transportation plan
for the National Capital Region

By 2045, metropolitan Washington's transportation system is expected to handle 21 million daily trips. To ensure each one is safe, efficient, and accessible, our regional transportation plan not only addresses ongoing challenges like congestion and crowding but looks boldly to the future.



EQUITY

We need a transportation system that works for all people, regardless of income, race, age, gender, or ability.



ECONOMY

Our roads, transit systems, and trail networks connect our communities, support the movement of goods, and lead to a stronger regional economy.



TRAFFIC SAFETY

Everyone should be able to get around safely. Whether on foot or bike, in a car, or on a bus, we're working together to reduce fatalities and injuries so every trip is a safe one.



FUNDING

Most transportation funding goes to the upkeep of existing infrastructure. We're promoting strategies to keep pace with demand, enhance the system, and make the most of every dollar.



CLIMATE CHANGE AND THE ENVIRONMENT

To protect our climate and ecosystems, transportation solutions need to reduce emissions and environmental impacts. We need to ensure transportation options are resilient and reliable as extreme weather increases.



PUBLIC HEALTH

Clean air, traffic safety, and healthy neighborhoods are directly linked to transportation planning. Making it easier to walk, bike, and take transit reduces emissions and helps communities thrive, even when faced with crises such as the COVID-19 pandemic.



LAND USE

As our population grows, we're promoting strategies that bring together jobs, a range of housing options, services, and recreational opportunities in walkable environments served by transit and freight.



EMERGING TECHNOLOGIES

Advancements in transportation technology can improve efficiency, safety, and integration, and reduce greenhouse gases. However, the role of connected and automated vehicles remains uncertain. We need to anticipate and adapt to beneficial innovations.



National Capital Region
Transportation Planning Board

Plan Together. Prosper Together.
Get involved with the Transportation Planning Board.

visualize2045.org
Think regionally, act locally.