

BRING JOBS AND HOUSING CLOSER TOGETHER

visualize
2045

A long-range transportation plan
for the National Capital Region

THE CHALLENGE

People travel from their homes to find jobs and opportunities. But jobs and housing are often not near each other, leading to longer commutes. A lack of travel options and affordable housing near jobs leads to congestion and delays.

As the region grows, how can we improve travel for all?



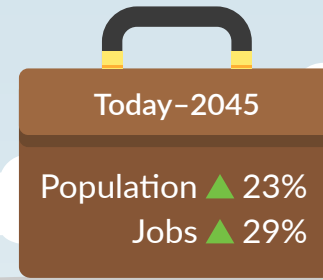
Since 2010, the region has focused on building **new homes in Activity Centers**, where housing, jobs, and transit are all close to each other.

THE SOLUTION

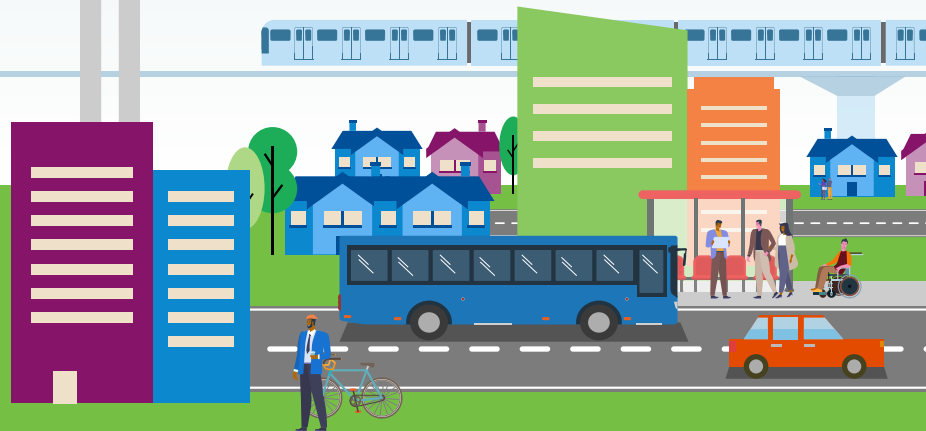
Here's how we can reduce congestion for everyone, while expanding housing options for people who want to live closer to where jobs are.

- Create and support policies that encourage building more housing
 - 320,000 new units needed by 2030
 - 75% to be affordable and near Activity Centers and transit
- Improve travel options in and between Activity Centers

This approach works! More choices mean less congestion.



But, Activity Centers are home to just **29% of the population**, despite containing **65% of the jobs**.



- How we get around is changing
- | | |
|-------------------|-----------------|
| Drive Alone | ----- ▼ 13% |
| Take Transit | ----- ▲ 7% |
| Use Active Travel | ----- ▲ Doubled |
| Telework | ----- ▲ Tripled |

(Change in each travel type's share of daily commutes, 2001-2019)

THE IMPACT

Source: TPB



Reduced traffic and emissions from transportation



Expanded travel options and shorter trips



Vibrant communities where people can live, work, and play



A stronger economy and improved quality of life